

Fitting OPTIONS :

- 1) MATERIAL CONSTRUCTION : STAINLESS STEEL
- 2) VOLTAGE : 24V / 110V / 230V / 415V AC/DC
- 3) CABLE GLAND & PLUG : BRASS/S.S./ALUMINIUM
- 4) PAINT SHADE : 632/355/7031/7032, etc... (As per Standard)
- 5) CANOPY : M.S. / G.I. / FRP
- 6) AMP. RATING : UPTO 63 Amp. (MAX.)
- 7) CABLE ENTRIES : 2 Nos. M25 / 3/4" NPT / 1" ET

- Reference IS/IEC Standard as follows :**
- 1 - FLAMEPROOF (Ex d) PROTECTION - IIA/IB, IS/IEC 60079-1 (2007)
 - TEMPERATURE CLASS - T6
 - 2 - INGRESS (IP) PROTECTION - IP-66, IS/IEC 60529 (2001).

Standard Specification :

- 1 - MATERIAL - CAST ALUMINIUM ALLOY
- 2 - FINISH - INSIDE & OUTSIDE LIGHT GREY EPOXY POWDER COATING SHADE No. 631 AS PER IS-5
- 3 - EARTHING - 1 No. INSIDE & 2 Nos. OUTSIDE M6 SIZE S.S./BRASS SCREWS WITH 2 Nos. PLAIN WASHER
- 4 - HARDWARE - STAINLESS STEEL
- 5 - GASKET - 'O' RING NEOPRENE RUBBER GASKET
- 6 - MOUNTING ARRGT. - AS SHOWN IN DRG.

Material / Components Specification :

- 1 - S.S. NAME CUM WARNING PLATE (WITH DESCRIPTION TITLE, CIMFR, PESO, SR. NO., GAS GROUP, RATING, BIS MARKING, WARNING STATUS, etc...)
- 2 - ELEMENT - 2 Nos. 10 Amp., 415V AC, (INO+1NC CONTACT ELEMENT OF 'TEKING/VAISHNO' MAKE
- 3 - ACTUATOR - 1 No. GREEN COLOUR SPRING RETURN TYPE & 1 No. RED COLOUR MUSHROOM HEAD, PRESS & TURN TO 'STOP' & REVERSE TURN TO RELEASE TYPE ACTUATOR OF 'SUDHIR' MAKE (NECESSARY PAD LOCKING ARRGT. IN 'STOP' POSITION WITHOUT LOCK)
- 4 - TERMINALS - 8 Nos. 2.5sq. mm CLIP-ON TYPE TERMINALS OF 'ELMEX/CONNECTWELL' MAKE
- 5 - CABLE ENTRIES - 3 Nos. M20 / 1/2" NPT / 3/4" ET EQUIVALENT
- CABLE ENTRIES FROM BOTTOM SIDE - REFER DRAWING
- 6 - CABLE GLAND - (Ex d) DOUBLE COMPRESSION TYPE CABLE GLAND OF 'SUDHIR' MAKE
- 7 - STOPPING PLUG - (Ex d) STOPPING PLUG OF 'SUDHIR' MAKE

Page No. : 138

THIS DRAWING IS PROPERTY OF "SUDHIR SWITCHGEARS PVT. LTD." AND MUST BE RETURNED ON REQUEST IF IT IS SUBMITTED AS CONFIDENTIAL INFORMATION IN CONNECTION WITH ENQUIRY, TENDER, ORDER, OR CONTRACTS IT IS NOT TO BE USED FOR ANY OTHER PURPOSE OR ORDER NOR MAY IT RE-COPIED OR LENT WITHOUT OUR AUTHORITY IN WRITING.

NOTE :		CAT. No.	PBS/OA/174
COMPONENT LAYOUT IS TENTATIVE RELOCATION OF PARTS & COMPONENTS IS POSSIBLE AT THE TIME OF ACTUAL MANUFACTURING.		MODEL No.:	PBS/174-2
OVERALL DIMENSIONS ARE ±10mm		DRN.	profill
Δ		CHKD.	JASRAH
Δ		APPD.	
Δ		SHEET	1 OF 1
REV.	DATE	DESCRIPTION	DRN.
			CHD.
			APPD.
			SCALE
			N. T. S. REV.-0

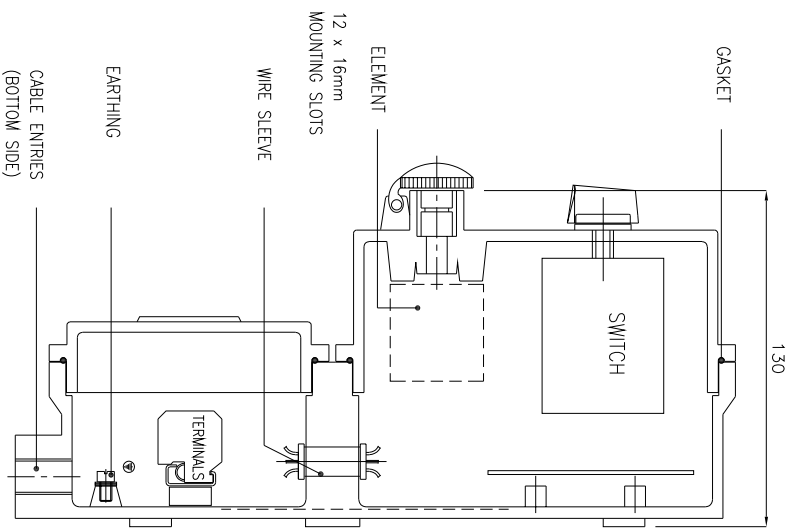
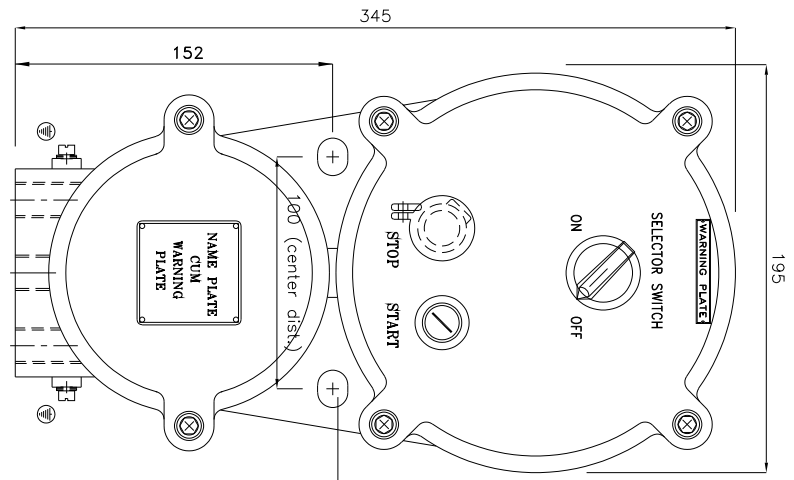
SUDHIR SWITCHGEARS PVT. LTD.
 130, MULBARI SAMACHAR MARG, MULBARI - 400 023

TITLE : **FLAMEPROOF - WEATHERPROOF ENCLOSURE FOR CONTROL STATION**

QMR. CERT. No. : CIMFR/TC/SR/1431
 Dt. 24/01/2013

PESO No. : PS24257/1
 Dt. 02/03/2022

BIS LICENCE No. : CM/L-0003331365



FRONT VIEW

SIDE VIEW

- Reference IS/IEC Standard as follows :
- 1 - FLAMEPROOF (Ex d) PROTECTION - IIA/IB, IS/IEC 60079-1 (2007)
 - TEMPERATURE CLASS - T6
 - 2 - INGRESS (IP) PROTECTION - IP-66, IS/IEC 60529 (2001).

Standard Specification :

- 1 - MATERIAL - CAST ALUMINIUM ALLOY
- 2 - FINISH - INSIDE & OUTSIDE LIGHT GREY EPOXY POWDER COATING SHADE No. 631 AS PER IS-5
- 3 - EARTHING - 1 No. INSIDE & 2 Nos. OUTSIDE M6 SIZE S.S./BRASS SCREWS WITH 2 Nos. PLAIN WASHER
- 4 - HARDWARE - STAINLESS STEEL
- 5 - GASKET - 'O' RING NEOPRENE RUBBER GASKET
- 6 - MOUNTING ARRGT. - AS SHOWN IN DRG.

Material / Components Specification :

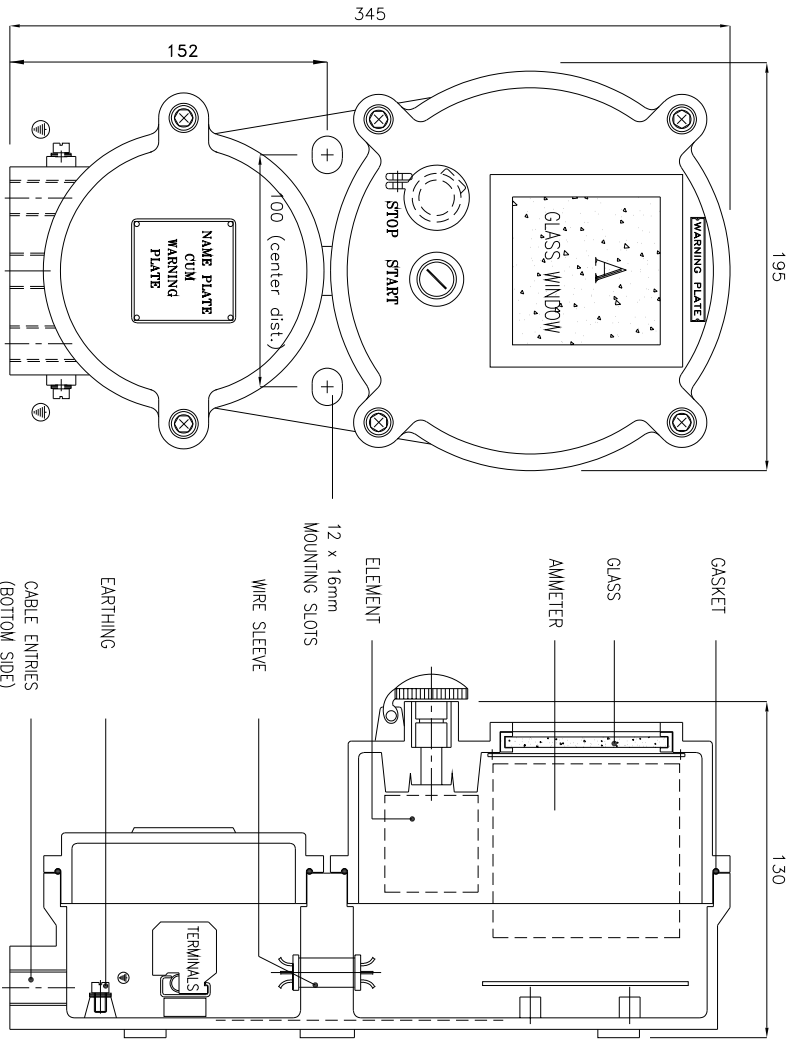
- 1 - S.S. NAME CUM WARNING PLATE (WITH DESCRIPTION TITLE, CIMFR, PESO, SR. NO., GAS GROUP, RATING, BIS MARKING, WARNING STATUS, etc...)
- 2 - SWITCH - 1 No. 6 Amp., 230V AC, SP/DP, ON-OFF SELECTOR SWITCH OF 'RECOM' MAKE
- 2 - ELEMENT - 2 Nos. 10 Amp., 415V AC, 1NO+1NC CONTACT ELEMENT OF 'TEKNIC/VAISHNO' MAKE
- 3 - ACTUATOR - 1 No. GREEN COLOUR SPRING RETURN TYPE & 1 No. RED COLOUR MUSHROOM HEAD, PRESS & TURN TO 'STOP' & REVERSE TURN TO RELEASE TYPE ACTUATOR OF 'SUDHIR' MAKE
- (NECESSARY PAD LOCKING ARRGT. IN 'STOP' POSITION WITHOUT LOCK)
- 4 - TERMINALS - 8 Nos. 2.5sq. mm CLIP-ON TYPE TERMINALS OF 'ELMEX/CONNECTWEL' MAKE
- 5 - CABLE ENTRIES - 3 Nos. M20 / 1/2" NPT / 3/4" ET EQUIVALENT
- CABLE ENTRIES FROM BOTTOM SIDE - REFER DRAWING
- 6 - CABLE GLAND - (Ex d) DOUBLE COMPRESSION TYPE CABLE GLAND OF 'SUDHIR' MAKE
- 7 - STOPPING PLUG - (Ex d) STOPPING PLUG OF 'SUDHIR' MAKE

Fitting OPTIONS :

- 1) MATERIAL CONSTRUCTION : STAINLESS STEEL
- 2) VOLTAGE : 230V / 415V AC
- 3) CABLE GLAND & PLUG : BRASS/S.S./ALUMINIUM
- 4) PAINT SHADE : 632/355/7031/7032, etc... (As per Standard)
- 5) CANOPY : M.S. / G.I. / FRP
- 6) SWITCH AMP. RATING : UPTO 32 Amp. DP/TP/IPN
- 7) SWITCH TYPE : LOCAL-REMOTE / AUTO-MANUAL, 2 WAY/3 WAY
- 8) CABLE ENTRIES : 2 Nos. M25 / 3/4" NPT / 1" ET

NOTE :
 COMPONENT LAYOUT IS TENTATIVE RELOCATION OF PARTS & COMPONENTS IS POSSIBLE AT THE TIME OF ACTUAL MANUFACTURING.
 OVERALL DIMENSIONS ARE ±10mm

<p>NOTE : COMPONENT LAYOUT IS TENTATIVE RELOCATION OF PARTS & COMPONENTS IS POSSIBLE AT THE TIME OF ACTUAL MANUFACTURING. OVERALL DIMENSIONS ARE ±10mm</p>		<p>CAT. No. PBS/0A/174</p>
<p>MODEL No.: PBS/174-4</p>		<p>DRN. prolii</p>
<p>DRN.</p>	<p>CHKD. JASNAK</p>	<p>CIMFR CERT. No.</p>
<p>APPL.</p>	<p>APPL.</p>	<p>PESD No. :</p>
<p>SHEET 1 OF 1</p>	<p>DATE: 24/01/2013</p>	<p>BIS LICENCE No. :</p>
<p>REV. DATE DESCRIPTION DRN. CHKD. APPL. SCALE</p>	<p>DR. 02/03/2022</p>	<p>CW/L-000331365</p>



FRONT VIEW

SIDE VIEW

Fitting OPTIONS :

- 1) MATERIAL CONSTRUCTION : STAINLESS STEEL
- 2) VOLTAGE : 230V / 415V AC
- 3) CABLE GLAND & PLUG : BRASS/S.S./ALUMINIUM
- 4) PAINT SHADE : 632/355/7031/7032, etc... (As per Standard)
- 5) CANOPY : M.S. / G.I. / FRP
- 6) DIGITAL/ANALOG INSTRUMENT : AMMETER/VOLTMETER/KWH METER, etc....
- 7) GLASS WINDOW OPENING : UPTO 72x72mm SIZE
- 8) CABLE ENTRIES : 2 Nos. M25 / 3/4" NPT / 1" ET

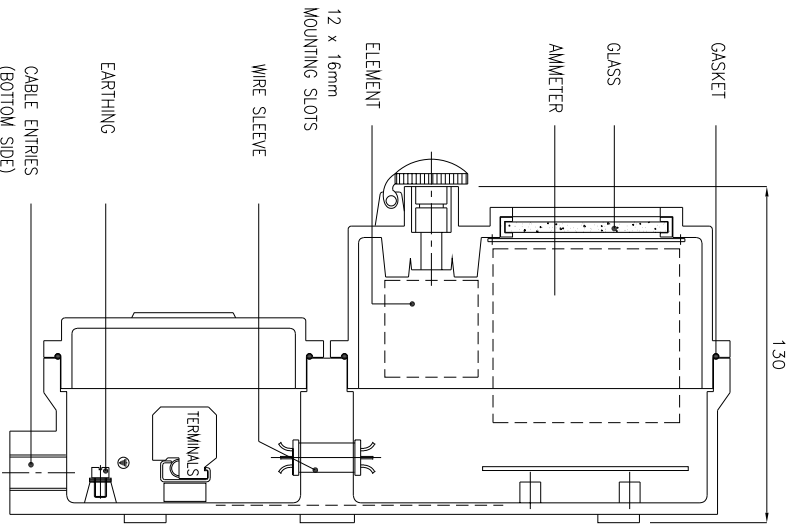
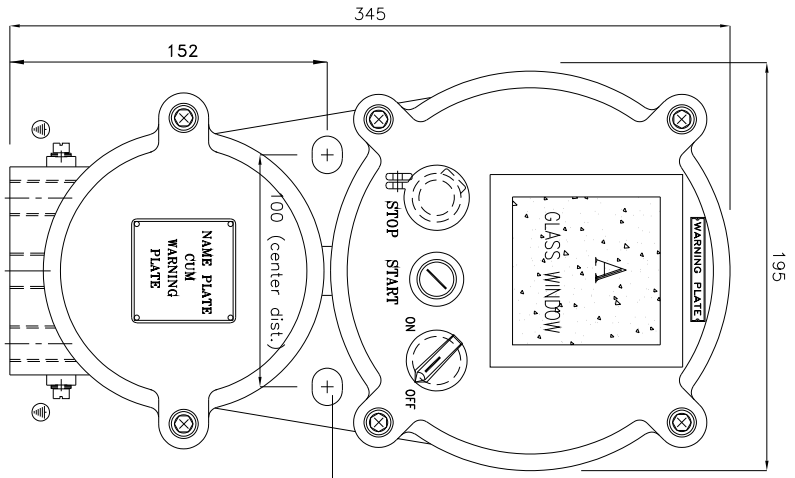
NOTE :
 COMPONENT LAYOUT IS TENTATIVE RELOCATION OF PARTS & COMPONENTS IS POSSIBLE AT THE TIME OF ACTUAL MANUFACTURING.
 OVERALL DIMENSIONS ARE ±10mm

REV.	DATE	DESCRIPTION	DRN.	CHD.	APPD.	SCALE
Δ						
Δ						
Δ						

CAT. No.	PBS/OA/174
MODEL No.	PBS/174-5
DRN.	profill
CHD.	JASHAKH
APPD.	
SHEET	1 OF 1
N. T. S.	REV.-0

QMR. CERT. No.	CIMFR/TC/SR/1431	PESO No. :	P524257/1	BIS LICENCE No. :	CM/L-0003331365
Dt.	24/01/2013	Dt.	02/03/2022		

- Reference IS/IEC Standard as follows :**
- 1 - FLAMEPROOF (Ex d) PROTECTION - IIA/IB, IS/IEC 60079-1 (2007)
 - TEMPERATURE CLASS - T6
 - 2 - INGRESS (IP) PROTECTION - IP-66, IS/IEC 60529 (2001).
- Standard Specification :**
- 1 - MATERIAL - CAST ALUMINIUM ALLOY
 - 2 - FINISH - INSIDE & OUTSIDE LIGHT GREY EPOXY POWDER COATING SHADE No. 631 AS PER IS-5
 - 3 - EARTHING - 1 No. INSIDE & 2 Nos. OUTSIDE M6 SIZE S.S./BRASS SCREWS WITH 2 Nos. PLAIN WASHER
 - 4 - HARDWARE - STAINLESS STEEL
 - 5 - GASKET - 'O' RING NEOPRENE RUBBER GASKET
 - 6 - MOUNTING ARRGT. - AS SHOWN IN DRG.
- Material / Components Specification :**
- 1 - S.S. NAME CUM WARNING PLATE (WITH DESCRIPTION TITLE, CIMFR, PESO, SR. NO., GAS GROUP, RATING, BIS MARKING, WARNING STATUS, etc...)
 - 2 - AMMETER - 1 No. 72 x 72mm SIZE, ANALOG/DIGITAL AMMETER OF 'MECO/EQUIVALENT' MAKE (AMMETER RANGE AS PER REQUIREMENT)
 - 2 - ELEMENT - 2 Nos. 10 Amp., 415V AC, 1NO+1NC CONTACT ELEMENT OF 'TEKINIC/VAISHNO' MAKE
 - 3 - ACTUATOR - 1 No. GREEN COLOUR SPRING RETURN TYPE & 1 No. RED COLOUR MUSHROOM HEAD, PRESS & TURN TO 'STOP' & REVERSE TURN TO RELEASE TYPE ACTUATOR OF 'SUDHIR' MAKE
 - (NECESSARY PAD LOCKING ARRGT. IN 'STOP' POSITION WITHOUT LOCK)
 - 4 - TERMINALS - 10 Nos. 2.5sq. mm CLIP-ON TYPE TERMINALS OF 'ELMEX/CONNECTWELL' MAKE
 - 5 - CABLE ENTRIES - 3 Nos. M20 / 1/2" NPT / 3/4" ET EQUIVALENT
 - CABLE ENTRIES FROM BOTTOM SIDE - REFER DRAWING
 - 6 - CABLE GLAND - (Ex d) DOUBLE COMPRESSION TYPE CABLE GLAND OF 'SUDHIR' MAKE
 - 7 - STOPPING PLUG - (Ex d) STOPPING PLUG OF 'SUDHIR' MAKE



FRONT VIEW

SIDE VIEW

Fitting OPTIONS :

- 1) MATERIAL CONSTRUCTION : STAINLESS STEEL
- 2) VOLTAGE : 230V / 415V AC
- 3) CABLE GLAND & PLUG : BRASS/S.S./ALUMINIUM
- 4) PAINT SHADE : 632/355/7031/7032, etc... (As per Standard)
- 5) CANOPY : M.S. / G.I. / FRP
- 6) DIGITAL/ANALOG INSTRUMENT : AMMETER/VOLTMETER/KWH MEIER, etc....
- 7) GLASS WINDOW OPENING : UPTO 72x72mm SIZE
- 8) SWITCH AMP. RATING : UPTO 16 Amp. DP/TP/TPN
- 9) SWITCH TYPE : LOCAL-REMOTE / AUTO-MANUAL, 2 WAY/3 WAY
- 10) CABLE ENTRIES : 2 Nos. M25 / 3/4" NPT / 1" ET

Reference IS/IEC Standard as follows :

- 1 - FLAMEPROOF (Ex d) PROTECTION - IIA/IB, IS/IEC 60079-1 (2007)
- TEMPERATURE CLASS - T6
- 2 - INGRESS (IP) PROTECTION - IP-66, IS/IEC 60529 (2001).

Standard Specification :

- 1 - MATERIAL - CAST ALUMINIUM ALLOY
- 2 - FINISH - INSIDE & OUTSIDE LIGHT GREY EPOXY POWDER COATING SHADE No. 631 AS PER IS-5
- 3 - EARTHING - 1 No. INSIDE & 2 Nos. OUTSIDE M6 SIZE S.S./BRASS SCREWS WITH 2 Nos. PLAIN WASHER
- 4 - HARDWARE - STAINLESS STEEL
- 5 - GASKET - 'O' RING NEOPRENE RUBBER GASKET
- 6 - MOUNTING ARRGT. - AS SHOWN IN DRG.

Material / Components Specification :

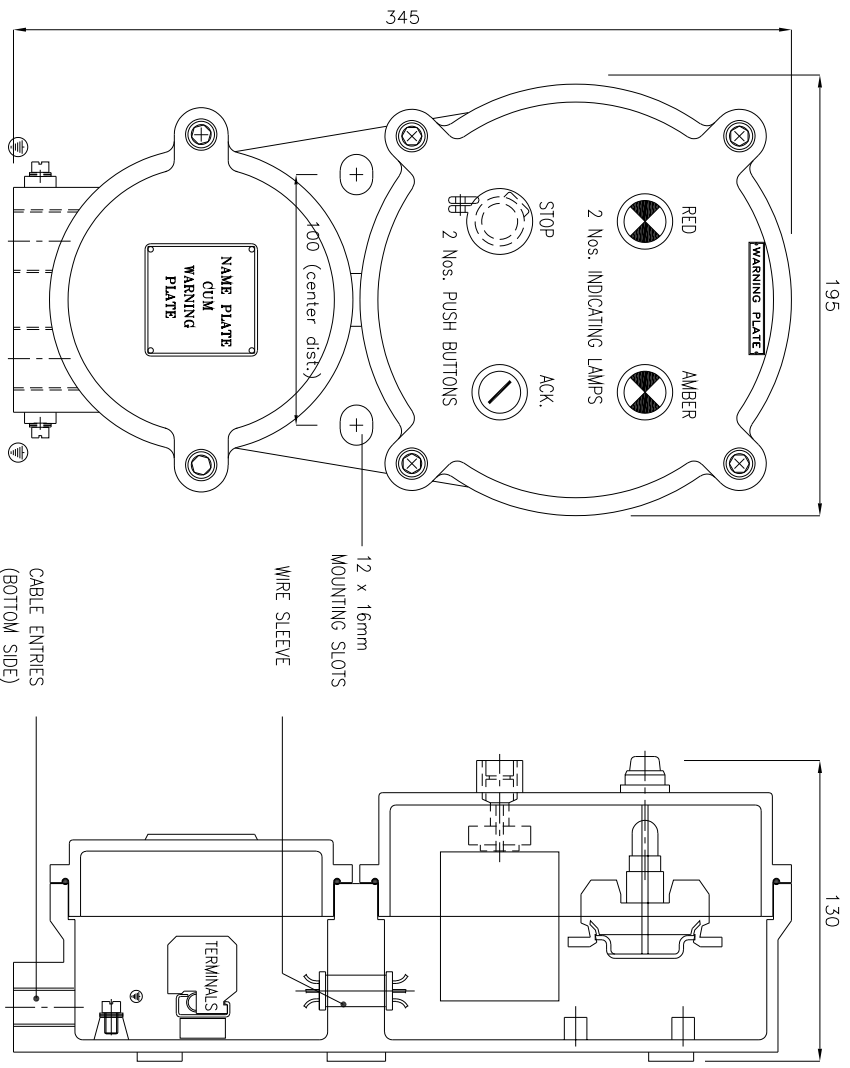
- 1 - S.S. NAME CUM WARNING PLATE (WITH DESCRIPTION TITLE, CIMFR, PESO, SR. NO., GAS GROUP, RATING, BIS MARKING, WARNING STATUS, etc...)
- 2 - AMMETER - 1 No. 72 x 72mm SIZE, ANALOG/DIGITAL AMMETER OF 'MECO/EQUIVALENT' MAKE (AMMETER RANGE AS PER REQUIREMENT)
- 2 - ELEMENT - 2 Nos. 10 Amp., 415V AC, 1NO+1NC CONTACT ELEMENT OF 'TEKINIC/VAISHNO' MAKE
- 3 - ACTUATOR - 1 No. GREEN COLOUR SPRING RETURN TYPE & 1 No. RED COLOUR MUSHROOM HEAD, PRESS & TURN TO 'STOP' & REVERSE TURN TO RELEASE TYPE ACTUATOR OF 'SUDHIR' MAKE
- 4 - SWITCH - 1 No. 6 Amp., 230V AC, SP/DP, ON-OFF SELECTOR SWITCH (NECESSARY PAD LOCKING ARRGT. IN 'STOP' POSITION WITHOUT LOCK)
- 5 - TERMINALS - 12 Nos. 2.5sq. mm CLIP-ON TYPE TERMINALS OF 'ELMEX/CONNECTWELL' MAKE
- 6 - CABLE ENTRIES - 3 Nos. M20 / 1/2" NPT / 3/4" ET EQUIVALENT
- CABLE ENTRIES FROM BOTTOM SIDE - REFER DRAWING
- 7 - CABLE GLAND - (Ex d) DOUBLE COMPRESSION TYPE CABLE GLAND OF 'SUDHIR' MAKE
- 8 - STOPPING PLUG - (Ex d) STOPPING PLUG OF 'SUDHIR' MAKE

Page No. : 141

NOTE :		CAT. No.	PBS/OA/174
COMPONENT LAYOUT IS TENTATIVE RELOCATION OF PARTS & COMPONENTS IS POSSIBLE AT THE TIME OF ACTUAL MANUFACTURING.		MODEL No.:	PBS/174-6
OVERALL DIMENSIONS ARE ±10mm		DRN.	profill
CHD.	JASHW	APPL.	
SHEET	1	OF	1
SCALE	N. T. S.	REV.	0

DRG. No.		SUDHIR SWITCHGEARS PVT. LTD.	
130, MULBA SAKACHE WARE, MULBA - 400 023		130, MULBA SAKACHE WARE, MULBA - 400 023	
TITLE : FLAMEPROOF - WEATHERPROOF ENCLOSURE FOR CONTROL STATION		QMR. CERT. No.	PESO No. :
CIMFR/TC/SR/1431			P524257/1
Dt. 24/01/2013		BIS LICENCE No. :	CM/L-000331365
			Dt. 02/03/2022

THIS DRAWING IS PROPERTY OF "SUDHIR SWITCHGEARS PVT. LTD." AND MUST BE RETURNED ON REQUEST IF IT IS SUBMITTED AS CONFIDENTIAL INFORMATION IN CONNECTION WITH ENQUIRY, TENDER, ORDER, OR CONTRACTS IT IS NOT TO BE USED FOR ANY OTHER PURPOSE OR ORDER NOR MAY IT RE-COPIED OR LENT WITHOUT OUR AUTHORITY IN WRITING.



Fitting OPTIONS:

- 1) MATERIAL CONSTRUCTION : STAINLESS STEEL
- 2) VOLTAGE : 24V / 110V / 230V / 415V AC/DC
- 3) CABLE GLAND & PLUG : BRASS/S.S./ALUMINIUM
- 4) PAINT SHADE : 632/355/7031/7032, etc... (As per Standard)
- 5) CANOPY : M.S. / G.I. / FRP
- 6) AMP. RATING : UPTO 63 Amp. (MAX.)
- 7) CABLE ENTRIES : 2 Nos. M25 / 3/4" NPT / 1" ET

Reference IS/IEC Standard as follows :

- 1 - FLAMEPROOF (Ex d) PROTECTION - IIA/IB, IS/IEC 60079-1 (2007)
- TEMPERATURE CLASS - T6
- 2 - INGRESS (IP) PROTECTION - IP-66, IS/IEC 60529 (2001).

Standard Specification :

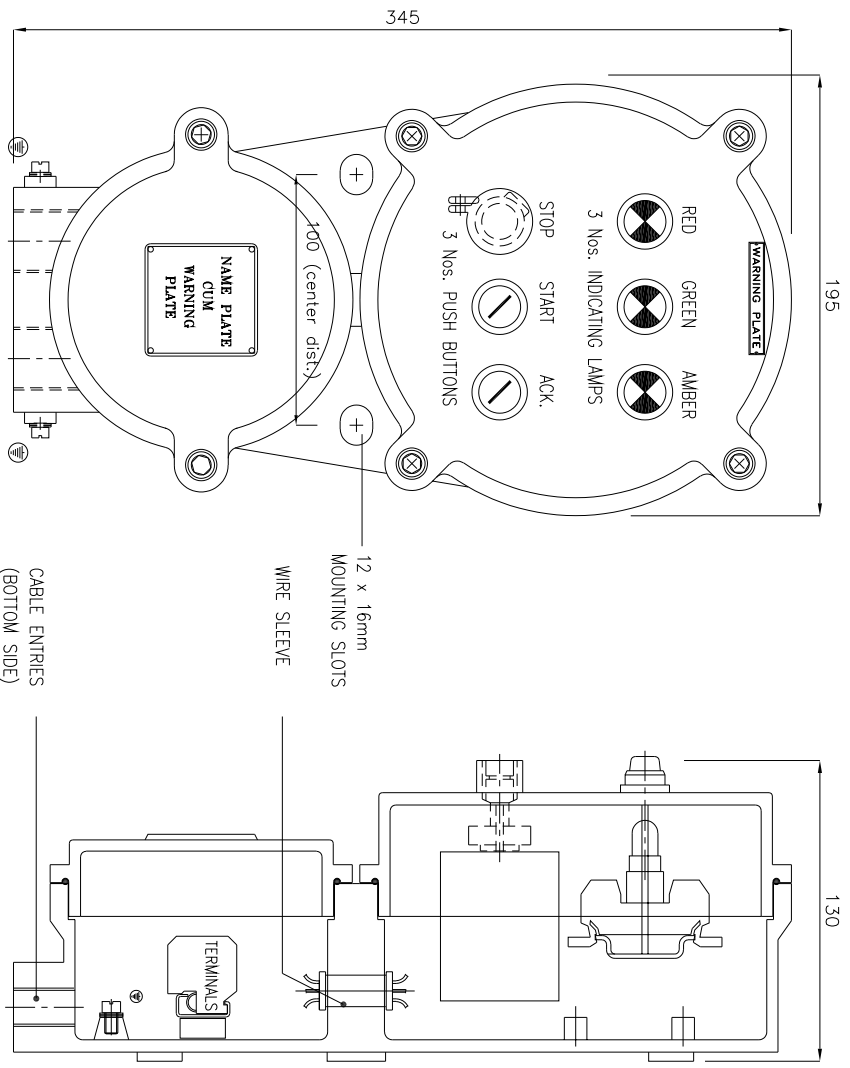
- 1 - MATERIAL - CAST ALUMINIUM ALLOY
- 2 - FINISH - INSIDE & OUTSIDE LIGHT GREY EPOXY POWDER COATING SHADE No. 631 AS PER IS-5
- 3 - EARTHING - 1 No. INSIDE & 2 Nos. OUTSIDE M6 SIZE S.S./BRASS SCREWS WITH 2 Nos. PLAIN WASHER
- 4 - HARDWARE - STAINLESS STEEL
- 5 - GASKET - 'O' RING NEOPRENE RUBBER GASKET
- 6 - MOUNTING ARRGT. - AS SHOWN IN DRG.

Material / Components Specification :

- 1 - S.S. NAME CUM WARNING PLATE (WITH DESCRIPTION TITLE, CIMFR, PESO, SR. NO., GAS GROUP, RATING, BIS MARKING, WARNING STATUS, etc...)
- 2 - INDICATING LAMP - 2 Nos. 240V AC, LED TYPE INDICATING LAMP OF 'TEKNIC/VAISHNO' MAKE
- 2 - ELEMENT - 2 Nos. 10 Amp., 415V AC, 1NO+1NC CONTACT ELEMENT OF 'TEKNIC/VAISHNO' MAKE
- 3 - ACTUATOR - 1 No. GREEN COLOUR SPRING RETURN TYPE & 1 No. RED COLOUR MUSHROOM HEAD, PRESS & TURN TO 'STOP' & REVERSE TURN TO RELEASE TYPE ACTUATOR OF 'SUDHIR' MAKE
- (NECESSARY PAD LOCKING ARRGT. IN 'STOP' POSITION WITHOUT LOCK)
- 4 - TERMINALS - 8 Nos. 2.5sq. mm CLIP-ON TYPE TERMINALS OF 'ELMEX/CONNECTWEL' MAKE
- 5 - CABLE ENTRIES - 3 Nos. M20 / 1/2" NPT / 3/4" ET EQUIVALENT
- CABLE ENTRIES FROM BOTTOM SIDE - REFER DRAWING
- 6 - CABLE GLAND - (Ex d) DOUBLE COMPRESSION TYPE CABLE GLAND OF 'SUDHIR' MAKE
- 7 - STOPPING PLUG - (Ex d) STOPPING PLUG OF 'SUDHIR' MAKE

THIS DRAWING IS PROPERTY OF "SUDHIR SWITCHGEARS PVT. LTD." AND MUST BE RETURNED ON REQUEST IF IT IS SUBMITTED AS CONFIDENTIAL INFORMATION IN CONNECTION WITH ENQUIRY, TENDER, ORDER, OR CONTRACTS IT IS NOT TO BE USED FOR ANY OTHER PURPOSE OR ORDER NOR MAY IT RE-COPIED OR LENT WITHOUT OUR AUTHORITY IN WRITING.

<p>NOTE :</p> <p>COMPONENT LAYOUT IS TENTATIVE RELOCATION OF PARTS & COMPONENTS IS POSSIBLE AT THE TIME OF ACTUAL MANUFACTURING.</p> <p>OVERALL DIMENSIONS ARE ±10mm</p>		<p>CAT. No. : PBS/0A/174</p> <p>MODEL No. : PBS/174-2</p>	<p>SUDHIR SWITCHGEARS PVT. LTD.</p> <p>130, MULBARI SAMACHAR MARG, MULBARI - 400 023</p>	<p>TITLE : FLAMEPROOF-WEATHERPROOF ENCLOSURE FOR CONTROL STATION</p>	<p>QMR. CERT. No. : CIMFR/TC/SR/1431</p> <p>Di. 24/01/2013</p>	<p>PESO No. : PS24257/1</p> <p>Di. 02/03/2022</p>	<p>BIS LICENCE No. : CM/L-0003331365</p>
REV.	DATE	DESCRIPTION	DRN.	CHD.	APPD.	SCALE	
Δ		
Δ		
Δ		



Fitting OPTIONS :

- 1) MATERIAL CONSTRUCTION : STAINLESS STEEL
- 2) VOLTAGE : 24V / 110V / 230V / 415V AC/DC
- 3) CABLE GLAND & PLUG : BRASS/S.S./ALUMINIUM
- 4) PAINT SHADE : 632/355/7031/7032, etc... (As per Standard)
- 5) CANOPY : M.S. / G.I. / FRP
- 6) AMP. RATING : UPTO 63 Amp. (MAX.)
- 7) CABLE ENTRIES : 2 Nos. M25 / 3/4" NPT / 1" ET

- Reference IS/IEC Standard as follows :**
- 1 - FLAMEPROOF (Ex d) PROTECTION - IIA/IB, IS/IEC 60079-1 (2007)
 - TEMPERATURE CLASS - T6
 - 2 - INGRESS (IP) PROTECTION - IP-66, IS/IEC 60529 (2001).

Standard Specification :

- 1 - MATERIAL - CAST ALUMINIUM ALLOY
- 2 - FINISH - INSIDE & OUTSIDE LIGHT GREY EPOXY POWDER COATING SHADE No. 631 AS PER IS-5
- 3 - EARTHING - 1 No. INSIDE & 2 Nos. OUTSIDE M6 SIZE S.S./BRASS SCREWS WITH 2 Nos. PLAIN WASHER
- 4 - HARDWARE - STAINLESS STEEL
- 5 - GASKET - 'O' RING NEOPRENE RUBBER GASKET
- 6 - MOUNTING ARRGT. - AS SHOWN IN DRG.

Material / Components Specification :

- 1 - S.S. NAME CUM WARNING PLATE (WITH DESCRIPTION TITLE, CIMFR, PESO, SR. NO., GAS GROUP, RATING, BIS MARKING, WARNING STATUS, etc...)
- 2 - INDICATING LAMP - 3 Nos. 240V AC, LED TYPE INDICATING LAMP OF 'TEKNIC/VAISHNO' MAKE
- 2 - ELEMENT - 3 Nos. 10 Amp., 415V AC, 1NO+1NC CONTACT ELEMENT OF 'TEKNIC/VAISHNO' MAKE
- 3 - ACTUATOR - 2 Nos. GREEN COLOUR SPRING RETURN TYPE & 1 No. RED COLOUR MUSHROOM HEAD, PRESS & TURN TO 'STOP' & REVERSE TURN TO RELEASE TYPE ACTUATOR OF 'SUDHIR' MAKE
- 4 - TERMINALS - 12 Nos. 2.5sq. mm CLIP-ON TYPE TERMINALS OF 'ELMEX/CONNECTWEL' MAKE
- 5 - CABLE ENTRIES - 3 Nos. M20 / 1/2" NPT / 3/4" ET EQUIVALENT
- CABLE ENTRIES FROM BOTTOM SIDE - REFER DRAWING
- 6 - CABLE GLAND - (Ex d) DOUBLE COMPRESSION TYPE CABLE GLAND OF 'SUDHIR' MAKE
- 7 - STOPPING PLUG - (Ex d) STOPPING PLUG OF 'SUDHIR' MAKE

THIS DRAWING IS PROPERTY OF "SUDHIR SWITCHGEARS PVT. LTD." AND MUST BE RETURNED ON REQUEST IF IT IS SUBMITTED AS CONFIDENTIAL INFORMATION IN CONNECTION WITH ENQUIRY, TENDER, ORDER, OR CONTRACTS IT IS NOT TO BE USED FOR ANY OTHER PURPOSE OR ORDER NOR MAY IT RE-COPIED OR LENT WITHOUT OUR AUTHORITY IN WRITING.

<p>NOTE :</p> <p>COMPONENT LAYOUT IS TENTATIVE RELOCATION OF PARTS & COMPONENTS IS POSSIBLE AT THE TIME OF ACTUAL MANUFACTURING.</p> <p>OVERALL DIMENSIONS ARE ±10mm</p>		<p>CAT. No. : PBS/0A/174</p> <p>MODEL No. : PBS/174-3</p> <p>DRN. : DRN. / JMSHW</p> <p>APPO. : APPO. / JMSHW</p> <p>SHEET : 1 OF 1</p> <p>SCALE : N. T. S. REV.-0</p>				
<p>SUDHIR SWITCHGEARS PVT. LTD.</p> <p>130, MULBARI SAMACHAR MARG, MULBARI - 400 023</p> <p>TITLE : FLAMEPROOF-WEATHERPROOF ENCLOSURE FOR CONTROL STATION</p> <p>CIMFR/TC/SR/1431</p> <p>Dt. 24/01/2013</p>		<p>PESO No. : PS24257/1</p> <p>BIS LICENCE No. : CM/L-0003331365</p>				
REV.	DATE	DESCRIPTION	DRN.	CHD.	APPO.	SCALE